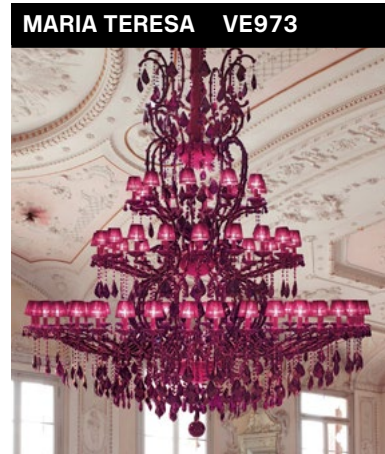
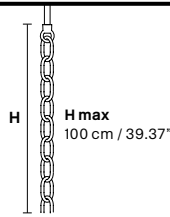


Design by: Masiero Lab

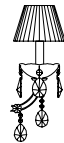


**MARIA TERESA VE973**

### Standard chain



### MT/CG



**MT**  
Traditional version  
**CG**  
Coloured glass version

**LIGHTING** Traditional E12 lightbulbs  
**SIZE** With lampshades, overall diameter is 5 cm (2") larger than specified  
**FRAME** **MT** Chrome or gold plated metal covered with transparent glass  
**CG** Painted metal covered with painted glass  
**LAMPSHADES** **MT** Organza ORG/14/V/O  
**CG** Organza ORG/14/...COLOUR  
**PENDANTS** **MT** Transparent glass or crystal  
**CG** Coloured glass

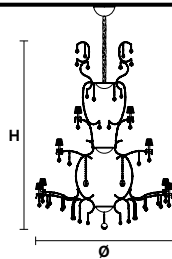
### CE RW/DW



**RW**  
RGB-W Led version  
**DW**  
Dynamic White Led version

**LIGHTING** WHITE LED sources CRI>90  
**RGB-W** each light 330 Nominal lm at 3000K  
**DW** each light 490 Nominal lm at 4700K  
**SIZE** Same size as MT or CG  
**FRAME** Chrome or gold plated metal covered with transparent glass  
**LAMPSHADES** No lampshades included  
**PENDANTS** transparent glass or crystal

### VE 973/70



#### TECHNICAL INFORMATIONS

**Ø** 290 cm / 114.17"  
**H** 300 cm / 118.20"  
**W** 135 kg / 297.6 lb

#### LIGHTING SYSTEM

70×E12×40 W max (not included).  
Triac Dimmable

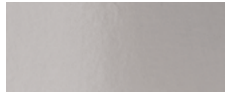
#### VERSION

**VE 973/70 MT - CG**

70×LED source ~280 W tot  
Control system: DMX  
On request Radio Control  
and Masiero Smart Light  
App only for RW version.

**VE 973/70 RW/DW**

#### MT TRADITIONAL



G04 Shiny chrome



G03 Shiny gold

#### MT DYNAMIC WHITE



#### MT RGB - W - LED



#### MT COLOURED GLASS

