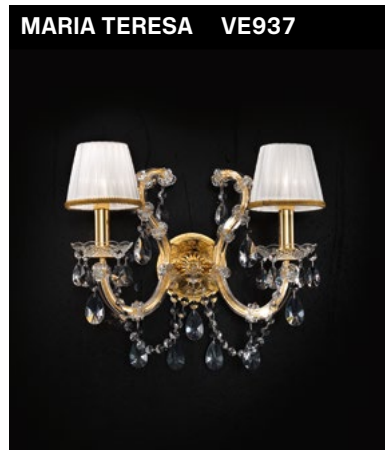


Design by: Masiero Lab

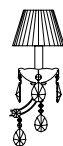
MT/CG



RW/DW

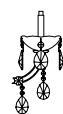


MARIA TERESA VE937



**MT**  
Traditional version  
**CG**  
Coloured glass version

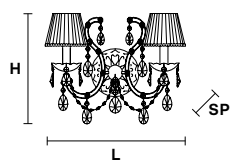
<b>LIGHTING</b>	Traditional E12 lightbulbs
<b>SIZE</b>	With lampshades, overall diameter is 5 cm (2") larger than specified
<b>FRAME</b>	<p><b>MT</b> Chrome or gold plated metal covered with transparent glass</p> <p><b>CG</b> Painted metal covered with painted glass</p>
<b>LAMPSHADES</b>	<p><b>MT</b> Organza ORG/12/WH</p> <p><b>CG</b> Organza ORG/12/...COLOUR</p>
<b>PENDANTS</b>	<p><b>MT</b> Transparent glass or crystal</p> <p><b>CG</b> Coloured glass</p>



**RW**  
RGB-W Led version  
**DW**  
Dynamic White Led version

<b>LIGHTING</b>	<p>WHITE LED sources CRI&gt;90</p> <p><b>RGB-W</b> each light 330 Nominal lm at 3000K</p> <p><b>DW</b> each light 490 Nominal lm at 4700K</p>
<b>SIZE</b>	Same size as MT or CG
<b>FRAME</b>	Chrome or gold plated metal covered with transparent glass
<b>LAMPSHADES</b>	No lampshades included
<b>PENDANTS</b>	transparent glass or crystal

### VE 937/A2



#### TECHNICAL INFORMATIONS

<b>L</b>	44 cm / 17.32"
<b>SP</b>	22 cm / 8.66"
<b>H</b>	36 cm / 14.17"

#### LIGHTING SYSTEM

2×E12×40 W max (not included).  
Triac Dimmable

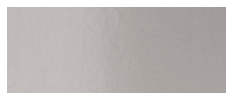
#### VERSION

**VE 937/A2 MT - CG**

2×LED source - 8 W tot  
Control system: DMX  
On request Radio Control and Masiero Smart Light App only for RW version.

**VE 937/A2 RW/DW**

#### MT TRADITIONAL



G04 Shiny chrome



G03 Shiny gold

#### MT DYNAMIC WHITE



#### MT RGB - W - LED



#### MT COLOURED GLASS

