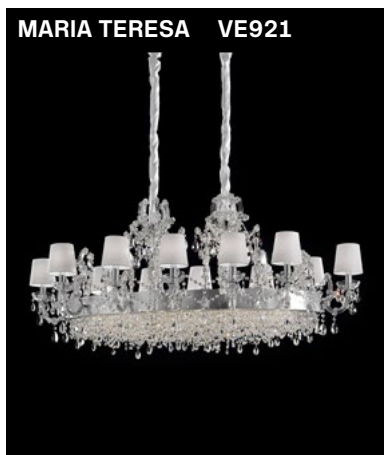


# VE 921

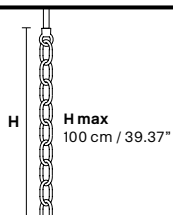
Design by: Masiero Lab

## Technical Info USA

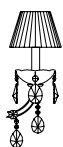
# MASIERO



### Standard chain



### MT/CG



**MT**  
Traditional version  
**CG**  
Coloured glass version

**LIGHTING** Traditional E12 lightbulbs  
**SIZE** With lampshades, overall diameter is 5 cm (2") larger than specified  
**FRAME** **MT** Chrome or gold plated metal covered with transparent glass  
**CG** Painted metal covered with painted glass  
**LAMP SHADES** **MT** Cottonette COT/12/WH  
**CG** Organza ORG/12/...COLOUR  
**PENDANTS** **MT** Transparent glass or crystal  
**CG** Coloured glass

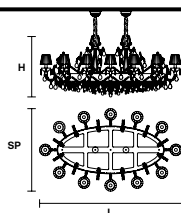
### CE RW/DW



**RW**  
RGB-W Led version  
**DW**  
Dynamic White Led version

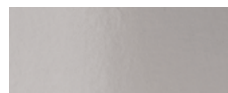
**LIGHTING** WHITE LED sources CRI>90  
**RGB-W** each light 330 Nominal lm at 3000K  
**DW** each light 490 Nominal lm at 4700K  
**SIZE** Same size as MT or CG  
**FRAME** Chrome or gold plated metal covered with transparent glass  
**LAMP SHADES** No lampshades included  
**PENDANTS** transparent glass or crystal

### VE 921/24



TECHNICAL INFORMATIONS	LIGHTING SYSTEM	VERSION
<b>L</b> 150 cm / 59.06"	12×E12×40 W max	<b>VE 921/24 MT - CG</b>
<b>SP</b> 85 cm / 33.46"	12×E26×60 W max (not included). Triac Dimmable	
<b>H</b> 68 cm / 26.77"		
<b>W</b> 43 kg / 94.79 lb	24×LED source -56 W tot Control system: DMX On request Radio Control and Masiero Smart Light App only for RW version.	<b>VE 921/24 RW/DW</b>

#### MT TRADITIONAL



G04 Shiny chrome



G03 Shiny gold

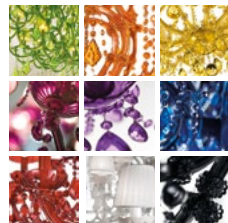
#### MT DYNAMIC WHITE



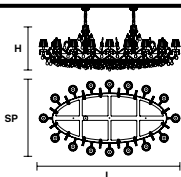
#### MT RGB - W - LED



#### MT COLOURED GLASS

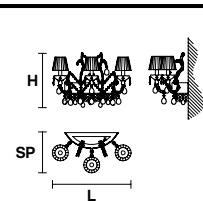


### VE 921/32



TECHNICAL INFORMATIONS	LIGHTING SYSTEM	VERSION
<b>L</b> 200 cm / 78.74"	16×E12×40 W max	<b>VE 921/32 MT - CG</b>
<b>SP</b> 110 cm / 43.30"	16×E26×60 W max (not included). Triac Dimmable	
<b>H</b> 65 cm / 25.59"		
<b>W</b> 60 kg / 132.27 lb	32×LED source -96 W tot Control system: DMX On request Radio Control and Masiero Smart Light App only for RW version.	<b>VE 921/32 RW/DW</b>

### VE 921/A3+1



TECHNICAL INFORMATIONS	LIGHTING SYSTEM	VERSION
<b>L</b> 60 cm / 23.62"	4×E12×40 W max (not included). Triac Dimmable	<b>VE 921/A3+1 MT - CG</b>
<b>SP</b> 30 cm / 11.81"		
<b>H</b> 40 cm / 15.75"		
	4×LED source -16 W tot Control system: DMX On request Radio Control and Masiero Smart Light App only for RW version.	<b>VE 921/A3+1 RW/DW</b>